

Excellence in Imaging Endpoints for CNS Trials

Transforming images into information.
Turning information into knowledge.
Mapping Life Pixel by Pixel.™

CNS Imaging Specialists

ICON Medical Imaging provides medical imaging solutions for clinical trials to the pharmaceutical, biotech and medical device industries around the globe. The use of medical imaging can enhance and support clinical trials, and expand the methods used to acquire biological information, thereby maximizing results. We ensure Imaging is successfully integrated into clinical trial design, implementation and analysis.

Advanced Science

Dedicated to the success of your imaging endpoints, ICON Medical Imaging provides personal, one-on-one interaction and consulting on the critical uses of imaging in your trials.

Experienced People

ICON Medical Imaging has the most experienced team in the industry. Our senior management team has continuously pioneered the use of imaging for drug development for over 20 years. ICON Medical Imaging's experienced team of Neuroradiologists and Radiologists possess significant experience in CT, PET and MRI. Our team has managed clinical trial imaging studies for a variety of central nervous system diseases including Alzheimer's disease, Multiple Sclerosis, Parkinson's disease, Schizophrenia and Stroke are just some of the neurodegenerative diseases that our staff has worked on in the recent past. Unlike other core labs, ICON Medical Imaging's project managers are imaging specialists.

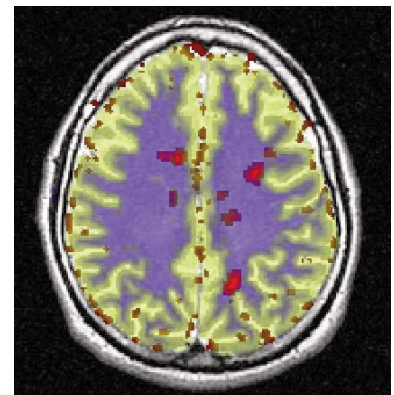
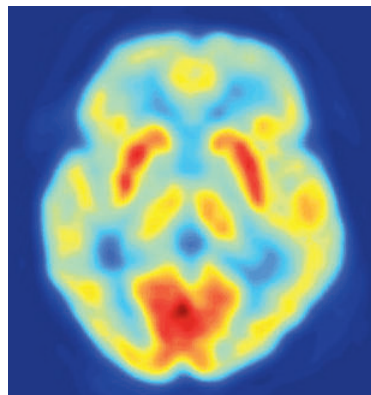
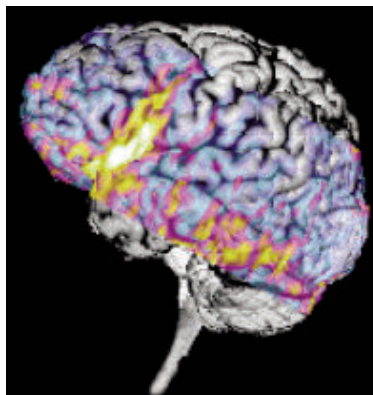
Superior Technology

ICON Medical Imaging provides leading image management, the fastest blinded read setup in the industry, 21 CFR Part 11 compliant technology, and a complete image based knowledge management system all designed to empower the sponsor with access to critical information anywhere, anytime.

ICON Medical Imaging's CNS Experience

From FDA and EMEA approvals through therapeutic expertise, our 20+ years of demonstrated results speak for itself. We know our success depends on the success of each and every client.

Indication	Phase	Subjects	Sites	Modalities
Alzheimer's Disease	I, II	292	9	CT, MRI, PET
Movement Disorders	III	1,000	35	SPECT
Multiple Sclerosis	I, II, III	2,899	217	MRI
Parkinson's Disease	I, III	2,130	212	MRI, PET, SPECT
Schizophrenia	II, III	651	57	MRI, PET
Stroke	II, III	904	130	Angio, CT, MRI



Data as of May 2009

For more information, please contact:

ICON Medical Imaging

2800 Kelly Road, Suite 200

Warrington, PA 18976

United States of America

Tel: +1 267 482 6300

Fax: +1 267 482 6301

Email: imaging@iconplc.com